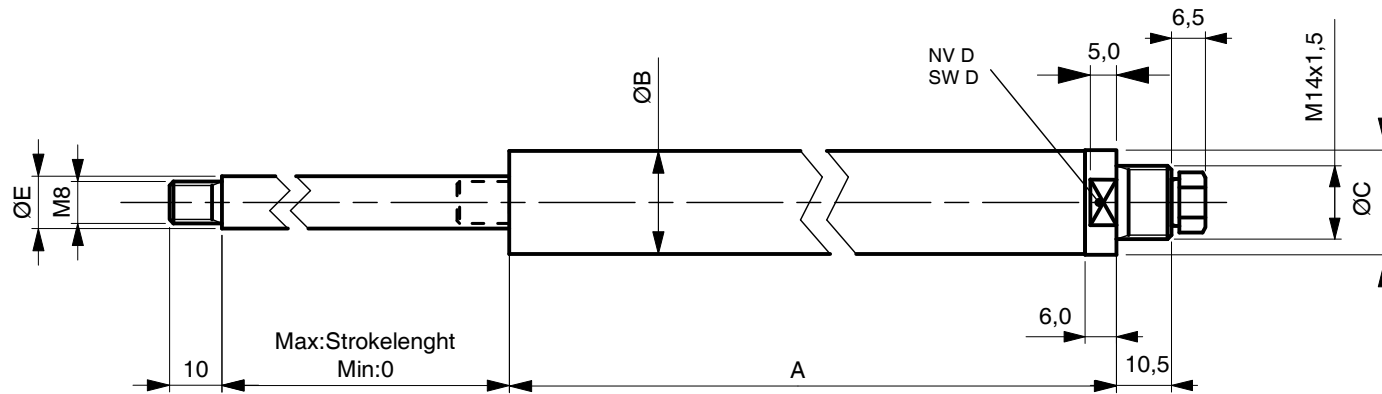


Denna ritning är ERGONOMIX AB:s egendom och skyddad enligt gällande lag samt får ej utan vårt skriftliga medgivande kopieras, delgivas annan eller obehörigen användas.
 These documents must not be copied without ERGONOMIX AB's written permission and contents thereof must not be imparted to a third party nor be used for any unauthorized purpose. Contravention will be prosecuted.



Articel nr.	Ind.	Stroke	A	B	C	D	E
AC3150		150	196,5	20	20	18	10
AC3212		212	258,5	20	20	18	10
AC3300		300	346,5	20	20	18	10
AC3424		424	470,5	20	20	18	10
AC3505		505	559,0	20	20	18	10
AC3600		600	661,5	20	20	18	10
AC4150		150	211,5	23	23,5	21	12
AC4212		212	273,5	23	23,5	21	12
AC4300		300	361,5	23	23,5	21	12
AC4424		424	485,5	23	23,5	21	12
AC4505		505	566,5	23	23,5	21	12
AC4600		600	661,5	23	23,5	21	12

Note! Do NOT fasten the cylinder rigidly in both ends, since this can effect the return stroke of the cylinder

		Ritn. storlek Drwg size A3	Skala/Scale 1:1	E 	Material
		Ritad av-Datum/ Drawn by-Date JÖS 080226	Godkänd av-Datum/ Approved by-Date		Benämning/ Description AC-cyl Build in cylinder for D3 & D4
		Erstatter/Replaces	Erstatt av/Replaced by	Ritn. nr./Drwg no. 11036	Index
Ergonomix AB					