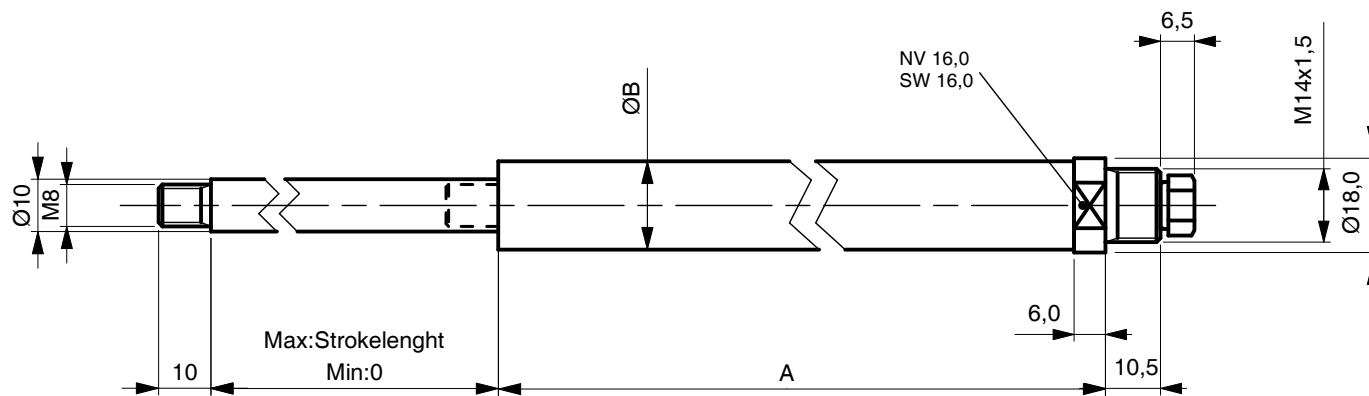


Denna ritning är ERGONOMIX AB:s egendom och skyddad enligt gällande lag samt får ej utan vårt skriftliga medgivande kopieras, delgivas annan eller obehörigen användas.
 These documents must not be copied without ERGONOMIX AB's written permission and contents thereof must not be imparted to a third party nor be used for any unauthorized purpose. Contravention will be prosecuted.



Articel nr.	Ind.	Stroke	A	B
AC1150		150	196,5	14,5
AC1212		212	258,5	14,5
AC1300		300	346,5	14,5
AC1424		424	470,5	14,5
AC1505		505	559,0	14,5
AC1600		600	661,5	14,5
AC2150		150	196,5	17
AC2212		212	258,5	17
AC2300		300	346,5	17
AC2424		424	470,5	17
AC2505		505	559,0	17
AC2600		600	661,5	17

Note! Do NOT fasten the cylinder rigidly in both ends, since this can effect the return stroke of the cylinder

		Ritn. storlek Drwg size A3	Skala/Scale 1:1	E 	Material
		Ritad av-Datum/ Drawn by-Date JÖS 080222	Godkänd av-Datum/ Approved by-Date		Benämning/ Description AC-cyl Build in cylinder for D1 & D2
Ergonomix AB		Ersätter/Replaces	Ersatt av/Replaced by	Ritn. nr./Drwg no. 11028	Index